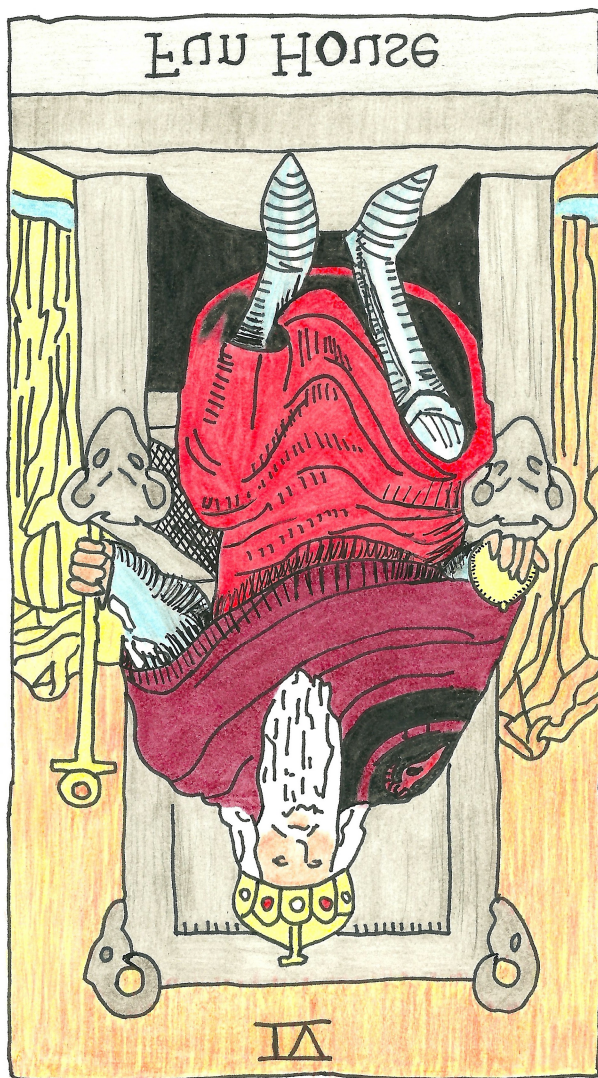


THE SILVER AGE PRESENTS



Vol 30 | September 20th, 2025

GENERALIFE
ORSON HELLS
VOSE
SOUR STATION

VENUE FEATURE: THE GARDEN HOUSE

Níðer 7 níðer 7 níðer héo pól

GENERALIFE

ig @generalifegeneralife | generalife.bandcamp.com

SPECIES: noise rock, post-punk, ebaycore, art punk, "big band"

CENTER OF OPERATIONS: Philadelphia, PA

MEMBERS: ZIN, ROBIN, AMS, MANNY, SPENCER, DAY, MO, PATRICK, ERIK, HOPE, ET ALLIO, ET AL.

ZIN

WEAPONS OF CHOICE: screaming, guitar

NOTES: capable of producing cyanotypes

CHANNEL: creamsoda360

MOTIVE: "if we weren't musicians we probably would just sit on the porch all day"

ROBIN SEE VOL. 9

WEAPONS OF CHOICE: drums etc.

HABITS: designs things

MOTIVE: playing his friends' music and having his friends play music he wrote is a way to share

AMS

MOTIVE: it's something to do

MANNY

NOTES: teacher

SPENCER

NOTES: is on sabbatical (off the record)

DAY NOTES: barista; everyone falls in love with them MO NOTES: painted their bedroom blue

PATRICK WEAPON OF CHOICE: theremin NOTES: forages mushrooms ERIK NOTES: absconds with HOPE on a boat HOPE WEAPON OF CHOICE: saxophone

NOTES: weaver of ribbons; absconds with ERIK on a boat integer overflow error integer overflow error integer overflow error integer overflow

NaNerror inteNaNger ovNaNerfNaNlo wNaNerrNaN o r inNaN

GENEALOGICAL REFERENCE: see map by EDWEIRDO

SEE VOLS. 5+16

EARLY GENERALIFE: ZIN was learning to scream, ROBIN was learning to drum, and PATRICK was learning to play synth, so they decided to form a band where ZIN screams, ROBIN drums, and PATRICK plays synth. PATRICK joined **three** years later.

NAME ORIGIN: named after Generalife

VERSIONS: **22** 37.17792°N, -3.58534°W

OVERLAPPING CELLS OF THE VENN DIAGRAM: blue jean, Ourselves, **double** suede

GENERATION: ZIN writes the lyrics and comes up with a part of a song, then everyone else comes up with other parts of the song. Everyone sits around the room and talks about what's been on their **minds**, then they think of the best possible thing to say and the best possible way to express it, then express it in that best possible way. There is **one** practice **per** show.

GIZMOS: DIY binaural microphones molded from ZIN and ROBIN's ears, **throat** bass (contact mic + choker + octave shift), phone handset wired as a vocal mic
"": generalife is life, and generalife is more than life, and generalife is the life

DOGMA: **sex**, other people being mad at you, ebay, liking things

RECENT WORKS: *generalife on **bug sounds**, generalife on bugsounds, generalife / iguanaweb / piper's bellflower split EP with Iguanaweb and Piper's Bellflower, basically whole entire*

LIKELY NEXT MOVES: recording a double album *generalife second album ever*, with **one** side recorded by ROBIN and the other recorded by NICHE



Orson Hells

ig @orsonhells | orsonhells.bandcamp.com

SPECIES: folk music about emotions

CENTER OF OPERATIONS: Philadelphia, PA

AGE: 27

PRAENOMEN: JULES SEE VOL. 12

NOM-DE-PLUME: reflects the journalistic nature of their songwriting

FASHIONED AFTER: Mason Jennings, Fleet Foxes, Amy Winehouse

CREATURES: SHILOH & SOPHIE (dogs), SLINKY (cat)

COMFORTS: dogs, singing, jamming with friends

DISCOMFORTS: lack of transparency and honesty; individualism vs. community building SEE VOL. 18

ANCIENS MILIEUX: The Tabernacle, The O'Fucchs

HOBBI: candlemaking, photography

FLUMEN ARTIS: emotional process; started out writing poetry; they usually write to figure out how they're feeling or solve a problem

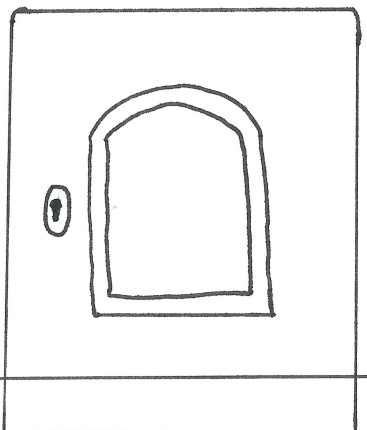
RECORDING LOCALE: bathtub

DOGMA: people, animals, the abstract

MOTIVE: to inspire a conversation of trauma healing and emotional acceptance

LIKELY NEXT MOVES: building a full band to lean into a jazzier style; mini tour in October TBA





V O S E

ig @v0se_ | yt @v0se_

SPECIES: indie electronic

CENTER OF OPERATIONS: Philadelphia, PA

MEMBERS: JAMES, RICH

JAMES

WEAPONS OF CHOICE: synth, bass, guitar, vocals

EARLY LIFE: has been playing on and off since 2018; formerly in Sour Station as a singer

INFLUENZA: early Gorillaz, early Glass Animals, midwest emo *SEE VOL. 30*

INDUSTRY: sound engineering

MOTIVE: there's nothing else he'd rather be; it's the easiest way to say something that you can't say out loud

RICH

WEAPON OF CHOICE: drums

EARLY LIFE: has been playing drums and taking lessons for 16 years; started playing in bands a couple years ago; formerly the lead singer of Bellevue *@bellevuesucks*

INFLUENZA: Stewart Copeland

INDUSTRY: manufacturing (surgical instruments)

MOTIVE: used to tap on his desk in school; his teachers complained, so his parents signed him up for drum lessons to get him to stop, and he realized it's something he likes to do

NUCLEATION: JAMES started the project solo in 2018 and released two albums over the following years. Later, he and RICH met when Bellevue participated in a battle of the bands for a studio JAMES was working at, and they started hanging out.

Eventually Bellevue stopped playing, and about 6 months ago JAMES asked RICH to join on drums.

ETYMOLOGY: JAMES was in a cover band in high school that didn't have a name. They were invited to play

in the school's senior picnic; in a series of misunderstandings, someone asked what the band name was, JAMES thought he was asking where they were from and said Trevoze, and the guy thought he said "Vose"

ASSEMBLY: They write pretty much exclusively by jamming in the DAW (Logic) with the aid of an analog synth. Once they have something they like, they go to the studio to write drums; they tend to record many takes until they find something that feels fun. JAMES is more hands-on with the mixing and production; they recently brought on a mastering engineer.

PERSONA: the embodiment of the digital footprint staring back at you with your projected fears and anxieties; the red hoodie was someone's last gift to JAMES and represents grief and fear worn as armor

IMAGERY: photography is a big shared interest between JAMES, his girlfriend, and RICH; a lot of the project's promotional photography has been shot on film

DOGMA: confronting problems that people avoid; pinpointing emotions that lead people to hate others and themselves

RECENT WORKS: "Thieves," ALL CONSUMING STATIC EYES, demos_vose

LIKELY NEXT MOVES: working on an EP called They Stole the Sky centered around technological surveillance and light pollution





ig @sourstation

SPECIES: indie rock

CENTER OF OPERATIONS: Philadelphia, PA

MEMBERS: DAN, NATALIE, NATE

DAN

WEAPON OF CHOICE: lead guitar

EARLY LIFE: played drums his whole life; started playing guitar at age 16, then studied jazz guitar at Bucks County Community College

MUSES: Peach Pit, Led Zeppelin, Crumb, Geese

INDUSTRY: landscaping

MOTIVE: hasn't been able to put down the guitar since he started learning

NATALIE

WEAPONS OF CHOICE: rhythm guitar, vocals

EARLY LIFE: has always played piano; dad went to school for jazz guitar; started guitar in junior year of high school, then studied jazz guitar at Bucks; started singing two years ago

MUSES: Radiohead, Steely Dan, Big Thief

INDUSTRIES: home improvement; music lessons

MOTIVE: it's the only thing that wasn't a phase

NATE

WEAPON OF CHOICE: bass

EARLY LIFE: has played guitar since he was 14; switched to bass at 17, then studied jazz bass at Bucks

MUSES: The Police, The Beatles, Primus

INDUSTRY: pizza, live music (Union Transfer)

MOTIVE: things just fell into place; had nothing better to do during COVID

ARRIVAL: DAN, NATALIE, and NATE met in college; DAN and NATE started the band in 2022 with a different singer, and NATALIE joined a year later

FORMERLY KNOWN AS: **Half Staff**

APPELLATIVE ANECDOTES: DAN once struck a particularly sour chord while noodling and said, "hmm, that chord sounded a little sour now, didn't it"; **unfortunately** there was already a DJ named Sour. Later, they decided to jam at a train station at 2 am; they determined it would be **stupid** to name the band after the station, **but** the original singer suggested combining it with Sour.

HAI AOIDAÍ: Typically, one of them will write a demo or make a voice memo and send it to the groupchat; if the others want to work on it, **they'll** run through it at practice, finish writing it if necessary, and arrange it. The song will then evolve as they play it live until it reaches its finished form. They **almost** **never** sit down and write together ~~from scratch~~.

TÒ PHÊMA: ~~NATALIE~~ writes **95%** of the lyrics; usually they all **come** in one sitting **while** she's **noodling**. Recently she has been challenging herself to write about **specific** topics.

HAI ÊKHAÍ: NATE now does all of the recording and production; uses the studios at Drexel; guitars amps miked with an SM57, an AKG, and a room mic; mixes and masters in Pro Tools with analog emulation plugins

IN SEARCH OF: drummer (moved to Nashville)

DOGMA: love, landscaping, schizophrenia

RECENT WORKS: *Sailing To Mars*, *Comedown*

LIKELY NEXT MOVES: new EP later this year ^{and 10/17} *@thegarden-philly*

UPCOMING SHOWS: October 25th, 2025 (@warehouse3)



* Automatic Killer Gun

Venue Feature

THE

GARDEN HOUSE

ig @tgh_philly

CENTER OF OPERATIONS: North Philadelphia

HOMELAND: Fairmount

CULTIVATED BY: AARON

AARON

INDUSTRY: film and tv, scriptwriting

PRESENT PURSUIT: raising money for a short film

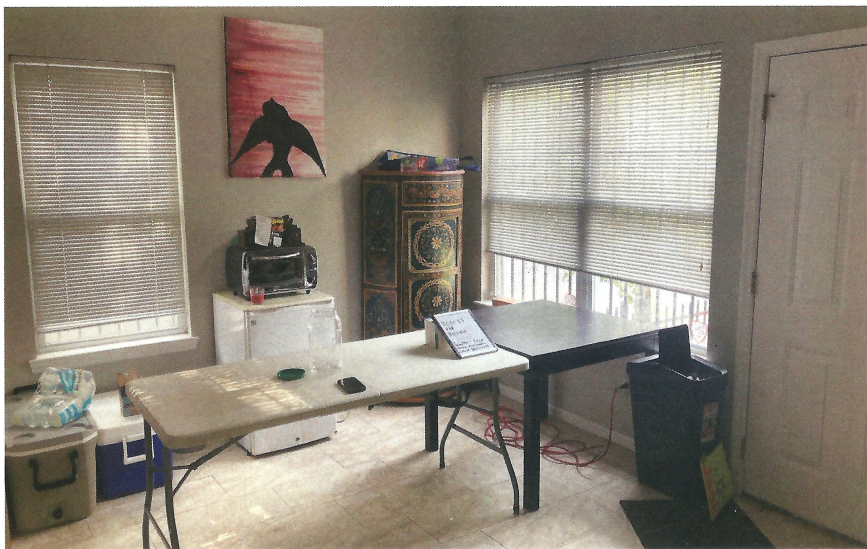


The living room

PLANTING: at Rutgers, AARON was involved with WRSU* and booked bands in the campus center; when they moved to Philly in 2023, they immediately got involved in scene and wanted to keep booking, so they opened a venue

TRIAL: gentrifying neighbors snitched to the landlord and forced the venue to move

*Wilhelm Reich Sexual Uprising



The kitchen

NAMESAKE: original house had a big backyard garden
 ACCESSIBLE VIA: Broad Street Line
 GENRES: folk, punk, femme punk
 SPECIAL EVENT: Garden Fest, an all-day show in the
 backyard with vendors at the beginning of summer



The backyard during Garden Fest

SIGHTS: fairy cave tapestry and RGB lights; SNES on the wall; TV upstairs with shows on
GREATEST GAGS: somebody asked to use the air fryer to make chicken nuggets; a guy showed up dressed as an NPC blacksmith and started giving people side quests
MOTIVE: cultivate a queer, inclusive, safe space
* Ruth Gator Binsburg



*Secure Nomadic Evacuation System



*Northern People Center

COFFEEHOUSE: low-key music with coffee,
baked goods, etc. included

FEATURING: FRUITLESS!, PANSY LEE
October 8, 2025 | DOORS 7 PM | MUSIC 8 PM | \$10
DM @the.silver.age.hq FOR ADDRESS



PLEASE BRING YOUR OWN MUG (BYOM)

Upcoming Shows at the HQ

Doors at 7:00 pm

October 8th, 2025

Coffeehouse

October 11th, 2025

Guest Show: Driving in America

October 18th, 2025

Alarm

November 5, 2025

Coffeehouse

Want to play at our venue?

Message @the.silver.age.hq on Instagram

Full interviews and other issues of Fun House
online at www.thesilverage.com/funhouse